



Spun Sampling Cylinders



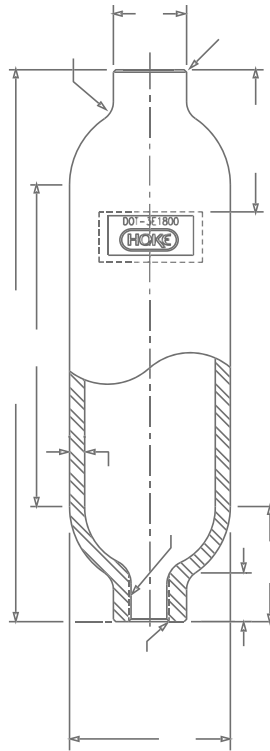
spun sampling cylinders

HOKE Incorporated
405 Centura Court • PO Box 4866 (29305) • Spartanburg, SC 29303
Phone (864) 574-7966 Fax (864) 587-5608
www.hoke.com • sales@hoke.com



Spun Sampling Cylinders

316 Stainless Steel DOT Series



spun sampling cylinders

Typical Applications

- Sampling hydrocarbons in refineries and petrochemical plants
- Gas sampling for chromatographic analysis
- Snubbers in reactor feed lines
- Surge accumulators in high pressure gas systems
- High vacuum systems as experimental chambers and molecular sieves
- Chemical reaction vessels

Features & Benefits

- Manufactured and tested to DOT 3E or 3A requirements
- Each cylinder is identified with the Hoke logo
- Cylinders are rated to 1800 psi
- Choice of 7 capacities, ranging from 75 cc to 3785 cc (1 gallon)
- Cylinder heads are formed by utilizing spinning process for consistent strength, size and dimensions.
- All interior surfaces are sandblasted for a clean, even surface.
- Neck ring and cap standard on 2250 cc and 3750 cc.
- Thread ends per ANSI B1.20.1
- All cylinders are hydrostatically proof-tested at 3000 psig (206 BAR).
- 150cc, 300cc, 500cc and 1000cc sizes are available as TPED - Approved
- Special High Tolerance NPT Thread

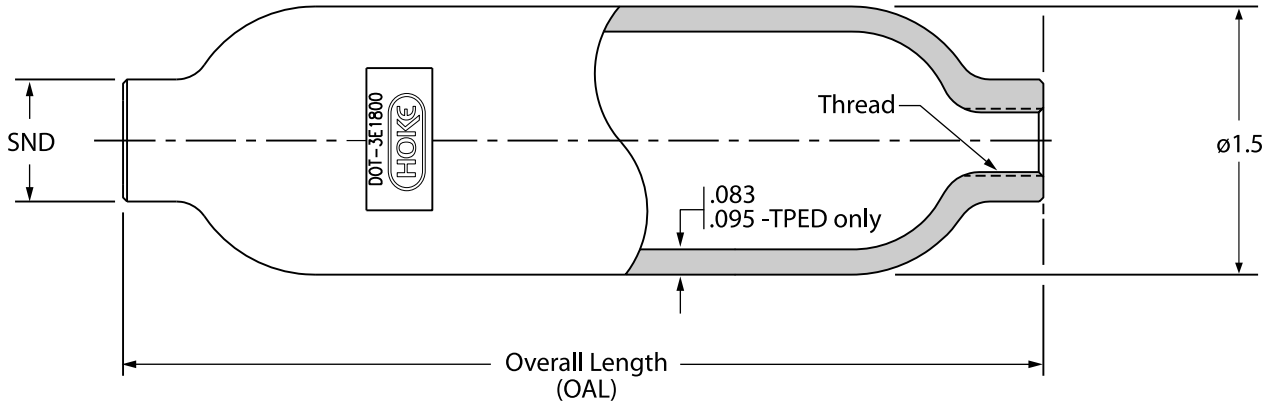
HOKE Incorporated

405 Centura Court • PO Box 4866 (29305) • Spartanburg, SC 29303
Phone (864) 574-7966 Fax (864) 587-5608
www.hoke.com • sales@hoke.com

Spun Sampling Cylinders

Dimensions

HOKE DOT 3E Sample Cylinder, 1.5" (3.81 cm)



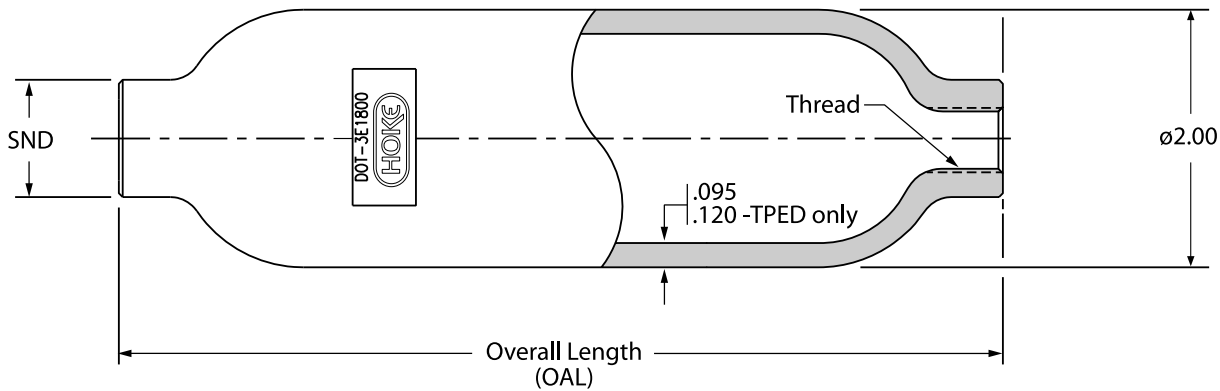
Technical Data

PART NO.	MIN. VOLUME	MAX. WEIGHT	OVERALL LENGTH ±0.10" (±2.5mm)	'SND' ±0.02" (±0.5mm)	THREAD	OPERATING PRESSURE
* HS4HDY75	75 cc (4.6 in. ³)	0.6 lbs. (0.3 kg)	4.88" (12.40 cm)	0.72" (1.83 cm)	¼-18 NPT	1800 psig (124 BAR)
HS4HDY150	150 cc (9.2 in. ³)	1.0 lbs. (0.5 kg)	8.25" (20.96 cm)	0.72" (1.83 cm)	¼-18 NPT	1800 psig (124 BAR)

* Not available as TPED - Approved

Dimensions

HOKE DOT 3E Sample Cylinder, 2.0" (5.08 cm)



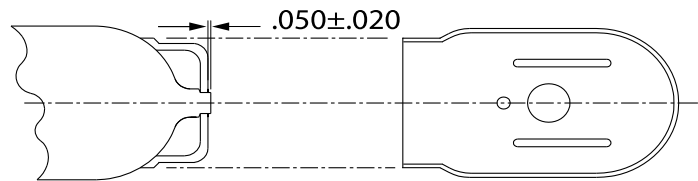
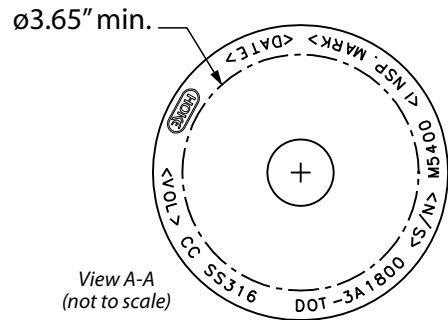
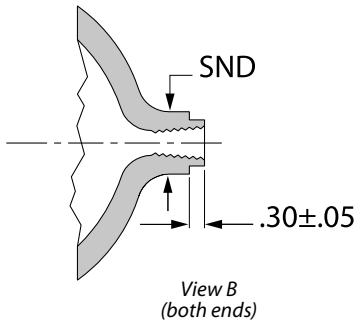
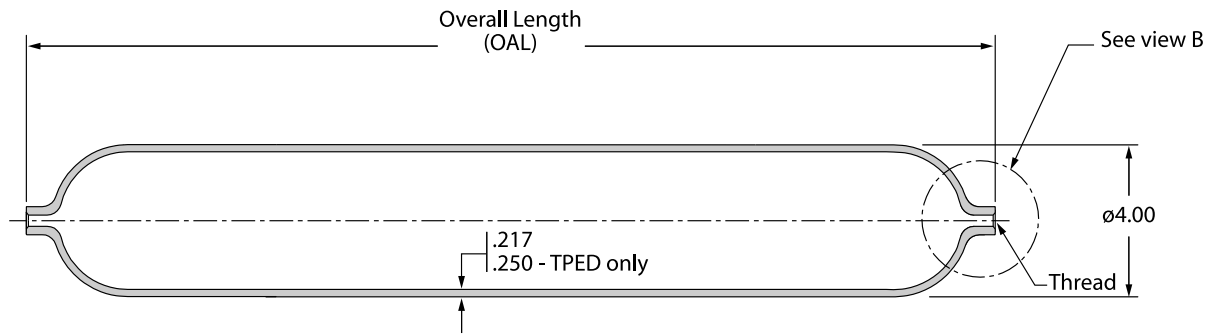
Technical Data

PART NO.	MIN. VOLUME	MAX. WEIGHT	OVERALL LENGTH ±0.10" (±2.5mm)	'SND' ±0.02" (±0.5mm)	THREAD	OPERATING PRESSURE
HS4HDY300	300 cc (18.3 in. ³)	1.8 lbs. (0.8 kg)	9.25" (23.5 cm)	0.74" (1.83 cm)	¼-18 NPT	1800 psig (124 BAR)
HS4HDY500	500 cc (30.5 in. ³)	2.5 lbs. (1.1 kg)	13.88" (35.26 cm)	0.74" (1.83 cm)	¼-18 NPT	1800 psig (124 BAR)

Spun Sampling Cylinders

Dimensions

HOKE DOT 3A Sample Cylinder, 4.0" (10.16 cm)



Technical Data

PART NO.	MIN. VOLUME	MAX. WEIGHT	OVERALL LENGTH ±0.10" (±4mm)	'SND' ±0.02" (±0.5mm)	THREAD	OPERATING PRESSURE
HS4HDY1000	1000 cc (60.1 in. ³)	7.5 lbs. (3.4 kg)	9.5" (24.13 cm)	1.0" (2.54 cm)	¼-18 NPT	1800 psig (124 BAR)
² HS8HDY1000	1000 cc (60.1 in. ³)	7.5 lbs. (3.4 kg)	9.5" (24.13 cm)	1.2" (3.05 cm)	½-14 NPT	1800 psig (124 BAR)
^{1, 2} HS8HDY2250	2250 cc (13.3 in. ³)	12.9 lbs. (5.9 kg)	17.2" (43.69 cm)	1.2" (3.05 cm)	½-14 NPT	1800 psig (124 BAR)
^{1, 2} HS8HDY1G	3785 cc (231.0 in. ³)	20.6 lbs. (9.4 kg)	26.5" (67.31 cm)	1.2" (3.05 cm)	½-14 NPT	1800 psig (124 BAR)

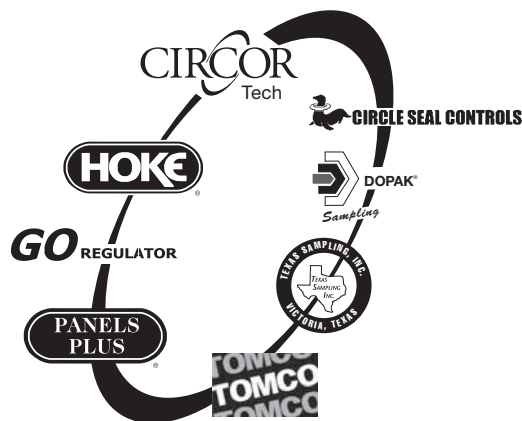
¹ Neck ring and cap assembly are only available for and are standard on the 2250 cc and 3785 cc (1 gal.) cylinders

² Not available as TPED - Approved

For Your Safety

It is solely the responsibility of the system designer and user to select products suitable for their specific application requirements and to ensure proper installation, operation, and maintenance of these products. Material compatibility, product ratings and application details should be considered in the selection. Improper selection or use of products described herein can cause personal injury or property damage.

Teflon® is a registered trademark of the DuPont Company.



Hoke • GO Regulator • Tomco • CIRCOR Tech

405 Centura Court • PO Box 4866 (29305)

Spartanburg, SC 29303

Tel (864) 574-7966 • Fax (864) 587-5608

www.circortechnologies.com

Hoke Controls / Panels Plus

2054 Francis St.
Ontario, CA 91761
Tel (909) 923-3770
Fax (909) 923-2550

www.circor-panelsplus.com

Dopak Inc.

9572 Kempwood
Houston, Texas 77080
Tel (713) 460-8311
Fax (713) 460-8578
www.dopak.com

Texas Sampling, Inc

3706 Rio Grande
Victoria, Texas 77901
Tel (361) 575-8087
Fax (361) 575-8157

www.texassampling.com

Circle Seal Controls

2301 Wardlow Circle
Corona, CA 92880
Tel (951) 270-6200
Fax (951) 270-6201

www.circlesealcontrols.com

CIRCOR Instrumentation Technologies

Central Europe

Leeuwenhoekweg 24
2661 CZ Bergschenhoek
The Netherlands
Tel +31 10 4206011 • Fax +31 10 4566774
www.circortechnologies.com

Hoke GmbH

Weitzesweg 11
Postfach 1541
D-61118 Bad Vilbel-Dortelweil
Germany
Tel +49 6101 82 56 0
Fax +49 6101 82 56 40
www.hoke.de

CIRCOR Instrumentation Technologies

CIRCOR Instrumentation Technologies (CIT) is a product group of CIRCOR International (NYSE: CIR), specializing in fluid process control solutions with orifice sizes typically up to 1". Our main product lines include ball, needle, packless, diaphragm, solenoid, and metering valves, pressure regulators, quick couplers, Gyrolok® compression tube fittings, and fully integrated sampling systems.

CIT markets primarily to the petrochemical, refining, power generation, food and beverage, semiconductor, and pharmaceutical industries, and to OEM's. CIT separates itself from the competition by offering highly engineered components manufactured to exacting standards and a variety of custom options.